



Canadian Flyer

Volume 23, Issue 1

January 2025

Operating and collecting toy trains

CTTA 2024-25

canadiantoytrains.org

OFFICERS:

President — Kyle Miller
604 941-3372

kylemiller@telus.net

Vice Pres -- Gary Zabenskie
604 812-8459

gzaben@telus.net

Secretary -- Charles Reif
250 539-0152

creif@shaw.ca

Treasurer — James Barrett
604 939-8035

barrettjd007@gmail.com

DIRECTORS AT LARGE:

James Cook -- 778 554-1110

jdcookaq@outlook.com

John Warlimont -- 604 864-2175

jewarl@yahoo.ca

Tom Modica -- 360 738-3842

ogfhr@gmail.com

Gord Barrett — 604 988-4263

gordon.barrett55@gmail.com

Howie Williams — 604 856-7124

howielw@shaw.ca

Island Member:

Ontario Member:

Robin Dodson -- 250 713-8970

robindodson43@yahoo.com

PAST PRESIDENT:

Mark Horne - 604-761-1500

mlhorne@shaw.ca

WEBSITE & MEMBERSHIP

kylemiller@telus.net

PRESIDENT'S REPORT

Hello everyone,

It's my pleasure to wish you all a very Happy New Year 2025! I hope you enjoyed a wonderful Christmas and Holiday Season, and of course I hope many of you were lucky enough to enjoy some toy train fun, or perhaps a new train to add to your layout or collection.

2024 ended on a high note. Our December meet was a full house with lots of trains bought and sold, a big auction and lots of prizes awarded. For once, all of the raffle prizes were handed out to those present.

2025 promises to start like a Bullet Train! In the West, we start with our annual 4-stop Bus Trip to the Great Train Show in Puyallup, WA, the Electric Train Shop and Eastside Trains on the 18th. I hope to see a busload of members on board for a super fun day! Right after that it's our 1st CTTA meet of 2025, and members out East will enjoy the Springfield, MA. show. In February it's the Monroe show back in WA. There's lots of great new O gauge Canadian products and custom runs coming out, and I've been pressing the 'buy' button a lot lately!

I look forward to a great year for our Club in 2025. It's been great having members from the USA and across Canada joining us for our lively CTTA meets. All my best, and I hope to see you soon!

Kyle

2024-25 CANADIAN CLUB MEETS

meetings at Charles Rummel Community Centre, Burnaby
doors open at 11am UPCOMING DATES:

SUNDAY JAN 26, 2025

SUNDAY FEB 23, 2025

SUNDAY MAR 30, 2025





CTTA Christmas Draw and December Door Prize Winners



St. Nick meets the Christmas Draw Prizes





...more december



EVENTS:

Jan 18-19, Puyallup WA
Great American Train Show
Jan 18, CTTA BUS TRIP see page 5!

Feb 22-23, Monroe WA
Washington State Model Train Show
INFO: <https://unwclub.com>

EDITOR'S CORNER (CHARLES REIF):

creif@shaw.ca

WAITING FOR THOSE LAYOUT PIX:

MOUNTAINS, TUNNELS, CATS ON THE
TRACKS — WHATEVER
AND THANKS KEN LOCKLEY FOR YOUR LAYOUT
ARTICLE.

KIT BASH TO SHOW? STORY TO TELL?

THE NORTH POLE EXPRESS BACK AT THE RAILWAY MUSEUM OF BRITISH COLUMBIA



and featuring Gordon Hall's Custom Painted Hudson & Christmas Layout



CTTA BUS TRIP January 18, 2025

This is a great bus trip of trains, comradery and fun so please join us!
Please contact our trip coordinator James Cook at 778-554-1110 or
jdcookag@outlook.com to sign up.

\$90.00 all inclusive

Departs: Campbell River Store – 6:30am

Returns: Campbell River Store – 8:30pm

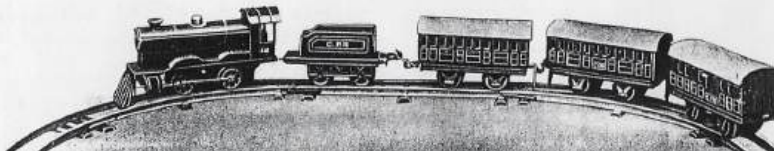
790 176 St. Surrey BC V3Z 9S6 Open 24/7

[parking available, \$10 for the day. park around back on the 8th Avenue side.]

Ralph Spielman sent along some classic photos of the old Pacific Electric Railway in Los Angeles. Included is the editor's favourite.

[As this newsletter is written, parts of Los Angeles are on fire. Wildfires aren't just in Canada.

Thinking of our LA friends.]



IN MEMORIUM - CLIFF COX

KEN LOCKLEY HAS PASSED ON THE NEWS THAT CLIFF COX, A 40 YEAR MEMBER OF TTOS AND CTTA, HAS DIED. CLIFF WAS VERY ACTIVE IN THE VICTORIA SECTION OF THE CLUB AND THE FORMER ISLAND LAYOUT GROUP, AND ALWAYS READY TO HELP ANYONE WITH THEIR TRAINS.



Clifford Cox Obituary (2024) - Victoria, BC - The Times Colonist - Legacy.com

COX, Clifford B. January 3, 1938 - December 9, 2024 Clifford Bernard Cox passed away in VGH on December 9, 2024 at the age of 86, after a long, hard-fought health battle. Predeceased by his parents Berna

www.legacy.com

Tom Modica spotted this voltage divider. It was made by Lionel. In the early 20th century there were ac and dc in homes in North East and Eastern Canada. You plugged into a wall dc outlet to control your ac trains. Mean.



Mark Horne posted these PGE paint samples

Canadian Toy Train Association
Mark Horne · 11h · 😊

I just received the pictures of the painted samples of our PGE passenger cars from Atlas. Outstanding as always.



Carl Chancey visited the Providence & Northern Railroad Club in Warwick, R.I., a large and very impressive HO layout operating on DCC with NCE controllers. Carl says that besides the wonderful layout, of note is the club membership which includes many young as well as older members all working together, a great sight to see.



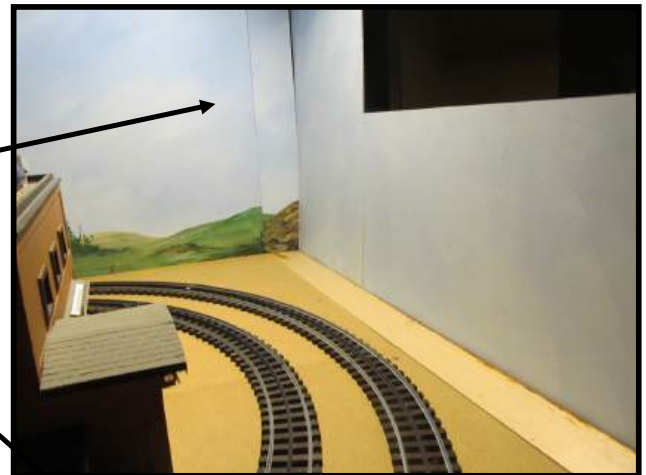
POCKETS OF INTEREST:

Ken Lockley

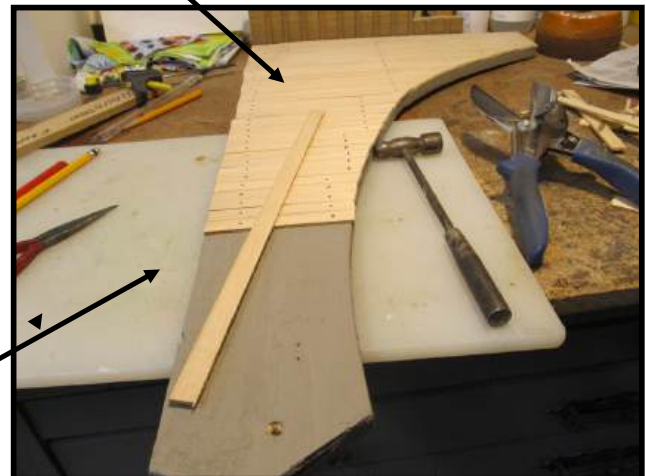
On my recently rebuilt smaller layout (Nov. 2024), I have divided the layout into six proposed areas of interest. Using this concept in the past, it makes for an easy approach to what can be a large under taking. This layout is a single level, four feet by eighteen feet and 40 inches off the floor. Mostly straight runs with some switching capabilities to keep it interesting. In total, 150 ft. of Gargraves track and seven Ross and Gargraves switches in use.

The pictures below show one end of the layout with a Station, Express Office and a Warehouse. The express office and warehouse have LED lighting to add some interest. I don't normally have many people on a layout but in a station area, people really do add to the scene. The buildings are my creation and pretty simple in construction. The scene is a whistle stop location and could be anywhere. I'm not a nail counter so scale is to my liking.

The blank corner, before spending a little time making a station platform and adding a small warehouse and train station to the scene. People and luggage added.



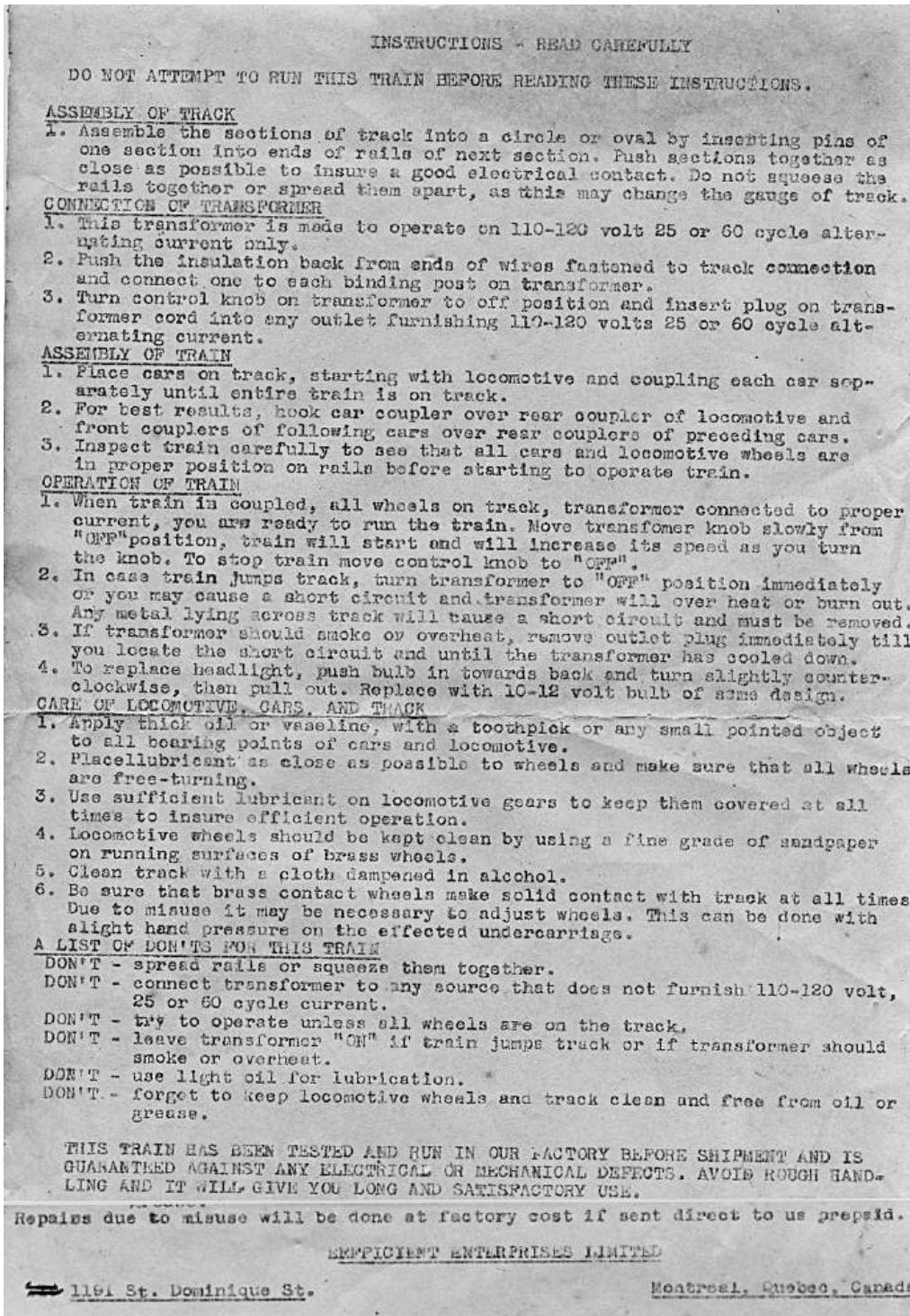
Simple station platform using plywood and cedar wood stripping giving a decked look and at the same time rising the elevation of the station.



New Information on the EEL Line Canada's only native 0 gauge electric train

Montreal collector **Claude Martel** has shared a rare EEL Line instruction sheet to supplement the previous Canadian Flyer article on EEL Line 2 rail 0 gauge trains and an effort to convert to 3 rail. (see the October 2020 edition on the website)

Claude has also provided the author with a new variation on conversion to 3 rail operation, in this case a brass roller centred on the ungeared axle (see below right).



Although the author has not been able yet to get the motor working, he has established continuity between the roller ball and the drive axle. How well this rig would work in practice is yet to be known.

