



Canadian Flyer

Volume 22, Issue 1

January 2024

Operating and collecting toy trains

CTTA 2023-2024
canadiantoytrains.org

OFFICERS:

President — Kyle Miller
604 941-3372

kylemiller@telus.net

Vice Pres -- Gary Zabenskie
604 812-8459

gzaben@telus.net

Secretary -- Charles Reif
604 731-3674

creif@shaw.ca

Treasurer — James Barrett
604 939-8035

barrettjd007@gmail.com

DIRECTORS AT LARGE:

James Cook -- 778 554-1110
jdcookaq@outlook.com

John Warlimont -- 604 864-2175
jewarl@yahoo.ca

Tom Modica -- 360 738-3842
ogfhr@gmail.com

Gord Barrett — 604 988-4263
gordon.barrett55@gmail.com

Howie Williams — 604 856-7124
howielw@shaw.ca

Island Member:

Ontario Member:

Robin Dodson -- 250 713-8970
robindodson43@yahoo.com

PAST PRESIDENT:

Mark Horne - 604-761-1500
mlhorne@shaw.ca

WEBSITE & MEMBERSHIP
kylemiller@telus.net

PRESIDENT'S REPORT

Our December meet had a bonanza of prizes and the biggest auction in quite a while! Close to 60 members attended our 'Bonus' meeting.

Congrats to Pauline Smith in Vernon, BC, and Troy Anderson in Chelsea, QC who proved its worth buying prize tickets wherever you are for the Christmas Raffle Prize draw! You can win multiple times and you don't have to be present to win.

I hope everyone got something to enhance your layout or collection from Santa over the Holidays.

With our final meeting of 2023 behind us, I'd like to extend my sincere thanks to those who stepped up to help the Club this year, with food and lunch services, BBQ grilling, transporting, operating and running trains on our Modular Layout, writing the Canadian Flyer newsletter and organizing our Bus Trip and events!

Congrats to Mark Horne who is featured in a CBC piece all about the joys of the intricate hobby of model railroading and the Hidden Museums that our layouts become. Enjoy it here! https://www.cbc.ca/news/interactives/features/Hidden_Museums
(I missed the opportunity to participate while away in Mexico!)

I was saddened to learn at our meet that the TTOS National Organization will dissolve at the end of December. However, it's very encouraging to see that local chapters and divisions of TTOS intend to carry on as independent organizations. This is great news, and with active member support, they will be as successful and as fun as the CTTA has become.

Finally, thanks to Ken Lockley from the 'Island Group', who has started the semi-annual 'COOTTS Island News' to keep the Vancouver Island O gauge enthusiasts connected. I will make their newsletter available to all Members on our Web site.

I'm looking forward to a very Happy New Year with you all and hope to see you soon!

Kyle

Bus Trip: Jan 20 / leaves campbell store 6:30am / \$90 cdn

2023-24 CANADIAN CLUB MEETS

meetings at Charles Rummel Community Centre, Burnaby
doors open at 11am UPCOMING DATES:

SUNDAY JAN 28 2024

SUNDAY FEB 25 2024

SUNDAY MAR 31 2024





<-- December
Door Prize
Winners.

Christmas
draw
winners -->



2nd draw
to absent
Troy
Anderson

*Unlike the June draw, at the December draw you don't have to be present, and you can win more than once.



3rd draw to absent
Pauline Smith



to Brian Beard



to Troy Anderson
and

It began to look a lot like Christmas for many CTTA members near and far



TCA PNWD Prez David Barth
joins us at CTTA



Blue skies and warm air, a far cry from last December's
snowstorm.

O Gauge is making a comeback in Europe....Although it's 2-rail. And what was European O Gauge like in the Pre- and Postwar years? One CTTA member struggled for the truth and was enlightened.

By Ralph Spielman

Yes, I am a "Southerner." We in the United States do not have the historical ties to the United Kingdom and France that Canada does. On a trip to both nations the last ten days of November, my consciousness was raised by seeing the O Gauge past and future at two separate venues of 1/43 and 1/45.

The UK version of the Amherst Railway Society Meet in Massachusetts...

Unlike many of my previous trips, there wasn't a lot of train riding, but I spent a long day at the **Warley National Model Railway Exhibition**, held in Birmingham UK, and a charming French Tinplate museum south of Paris. Two very different facets, a whole new threshold of hobby interest for me to experience,

First off, the Warley show was held the weekend after American Thanksgiving; we had planned to visit our son in Birmingham, and this was a great add-on, which coincided with our evening flight from the UK to Paris.

The show was held at the National Exhibition Centre, which is about a ½ mile walk from the Airport Railway Station, and that, in turn, is connected by another ½ mile automated "bug" that carries about 30 people from the rail station to the airport terminal.

The show sees about 10,000 people over a two day period in a space that is the size of the Yaletown Costco. The aisles are quite wide, there are plenty of seats around the exhibition spaces, and the floors, of course, are hard. There were 8 separate O gauge layouts—5 post BR steam, and 3 narrow gauge O ones. Additionally, there were nine different rail heritage societies, 115 different vendors that ran the gamut from the Swiss Rail Enthusiast group to Woodland Scenics. There were a few people selling used trains, and some hobby shops selling new equipment. Yes, N and OO were represented as well, but I tried to focus on O gauge.

Not surprisingly, Bachman was well represented in that realm, as they are at the January Springfield MA show, with many UK-Prototype locomotives and cars. Other O manufacturers were represented as well, including PECO, who has steam-era rolling stock and Accurascale, who is entering the O scale market with a 1938 Ruston/Hornsby 88hp 4-wheel diesel "shunter."

The biggest surprise to me was Heljan, who has, like Bachman, an incredible range of UK prototype. In their 2023 catalog, there are O Gauge locomotives and rolling stock including the beloved Deltic diesel. Self-propelled rail cars, passenger cars and freight cars.

I would be remiss if I did not mention the **Gauge O Guild**, which has been in existence for 70 years, promoting 7mm trains(www.gaugeoguild.com). They are a membership-driven group with a magazine and other membership items. In total, I spent five and a half hours combing the Hall, a very worthwhile and tiring day indeed. *Continued pg 4...*



EVENTS:

Sat/Sun Jan 20, 21 Puyallup, WA

THE GREAT TRAIN SHOW

INFO: www.thefair.com/activities/great-train-show

Sat Jan 20 is CTTA Bus Trip

Sat/Sun Feb 24, 25 Monroe, WA

UNITED NORTHWEST 31ST WA. STATE TRAIN SHOW

INFO: www.unwclub.com

EDITOR'S CORNER (CHARLES REIF):

LET US SEE YOUR LAYOUT'S PROGRESS:

SEND PHOTOS AND TEXT DESCRIPTIONS

LET US KNOW WHAT YOU ARE DOING
AND WHY YOU ARE DOING IT?

KIT BASH TO SHOW? STORY TO TELL?

...Continued from pg 3

Tinplate a la Francaise

Spielman

On the other side of the English Channel, five incredible days of sightseeing, museum-hopping and memorable meals was broken up for a half day of travel to Rambouillet, a pleasant suburb about 30 miles southwest of Paris, a 40-minute train ride from Paris's Montparnasse Station.

The Musee Rambolitrain is located in a district noted for the Lantern cultural center and the main church in town that dates from 1871. The Museum is in a three-story house, which is not accessible for the mobility challenged. Once inside, it is a revelation. Toy Train collector Jacques Visbecq amassed nearly 4,000 items, on display and which retrace the 150-year history of model trains in Europe. No Lionel or American Flyer here!

The second floor has a display of many of the collected items; the third floor has an amazing layout replicating French railroading in 2-rail O gauge, and mixing many elements from various places in France. Surprisingly, many pieces are MTH, with some Fulgurex and some from other manufacturers. Over 1300 feet of track on a table over five feet high makes for one incredible operation.

But, for most CTTA members, the gold is in the displays. In glass cases, the history of European tinplate manufacture is evident. Both the big names like Marklin and Bing, and the more obscure smaller ones, long vanished are on display. Literally, my head was spinning, with the floor to ceiling cases noting the handiwork of models from the very small 0-4-0s to Beyer Garretts and Crocodiles. With some standard gauge on exhibit, most of the items were O Gauge (in France, 1/43, while the British use 1/45).

The Museum's website is www.rambolitrain.com.

Both venues made for interesting footnotes on a great vacation.



a "who's who" of historic European toy trains



Jep trains on display — classy French tinplate

Running Standard Gauge trains at the Volunteer Park conservatory, Seattle with Don Miholovich, TCA PNWD



Here's me, Don Miholovich holding my American Flyer Wide Gauge #4000 locomotive & one of the passenger cars from a 1926 train set that started it all! My dad & his two brothers had one just like it that I used to play with as a young boy when we visited my grandmother during Christmas. The older brother eventually took it and when he passed away, the train got lost out of the family. A few years ago, I was ecstatic to find this set at the "Electric Train Shop" here in the Seattle area.



Lots of action on the holiday display in the Conservatory at Volunteer Park in Seattle.



David Helgeson's MTH/Lionel #400E Standard Gauge Train at Volunteer Park in Seattle. (David manages the conservatory and built this original layout for the Christmas holidays.)



David's MTH/Lionel #408E Electric locomotive passing Don's American Flyer Hamiltonian set.

Don was one of the TCA PNWD exec who visited our November meeting. Always welcome! [ed.]



Gord Barrett shows his Airex collection, including 6014X and rare 6044 at bottom.



CN 6400 at the Canada Science and Technology Museum in Ottawa, with the CN Magazine cover august '39 celebrating CN's part in the Royal Tour.



Information Requested by Editor:

In the January 1952 issue of Railroad Model Craftsman, in an ad by Leonard Blum's HOBBY HOUSE, in a section on O Scale Locomotives, they advertised a "Lionel Super Hudson" for \$150.00. What was this "Super Hudson"? A super-detailed customized 773? Or? ...your answers to creif@shaw.ca



John Warlimont picked up this 1957 uncatalogued set, uncommon, 626 is 1957 only. Running well with a tuneup.



David Cook shared Zoltan Gyoker's latest creation for him: a blue goose made from a Marx observation car, Marx 2-wheel motor, and a truck body. Everyone will want one!



Martin & Leona Howbold's Christmas tree S-gauge layout, with the exotic BCE tank car.

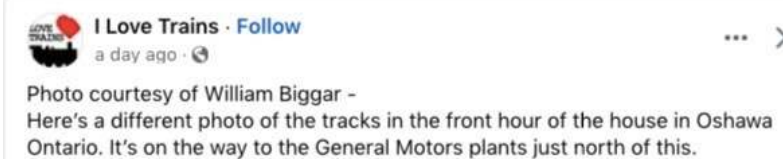
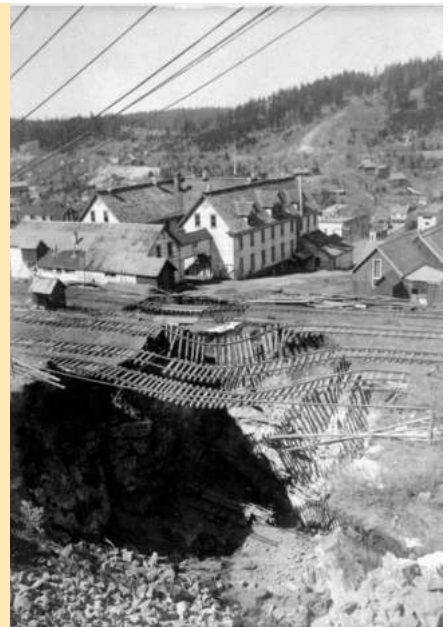


Photo courtesy of William Biggar - Here's a different photo of the tracks in the front yard of the house in Oshawa Ontario. It's on the way to the General Motors plants just north of this.



Yes in Canada - you can have a freight train lumber down your street, and stop at your porch.

Don McKay shared this 'Lost BC' post of the astounding cave-in at the mining ghost town of Phoenix BC. When copper prices fell, the town was abandoned around 1920.



Christmas 1957 at Eaton's stores: —>
left:
 in Toronto, the CN 6400 rules the mini-train rails.
right:
 in Montreal, its the CP Royal Hudson.
 (an example of CN/CP co-operation?)

