



Canadian Flyer

Volume 21, Issue 4

April 2023

Operating and collecting toy trains

CTTA 2022-2023
canadiantoytrains.org

OFFICERS:

President — Kyle Miller
604 941-3372

kylemiller@telus.net

Vice Pres -- Gary Zabenskie
604 463-1006

gzaben@telus.net

Secretary -- Charles Reif
604 731-3674

creif@shaw.ca

Treasurer — James Barrett
604 939-8035

barrettjd007@gmail.com

DIRECTORS AT LARGE:

James Cook -- 778 554-1110

jcookaq@outlook.com

John Warlimont -- 604 864-2175

jewarl@yahoo.ca

Tom Modica -- 360 738-3842

ogfhr@gmail.com

Gord Barrett — 604 988-4263

gordon.barrett55@gmail.com

Howie Williams — 604 856-7124

howielw@shaw.ca

Island Member:

Ontario Member:

Robin Dodson -- 250 713-8970

robindodson43@yahoo.com

PAST PRESIDENT:

Mark Horne - 604-761-1500

mlhorne@shaw.ca

WEBSITE & MEMBERSHIP

kylemiller@telus.net

PRESIDENT'S REPORT

Our March meet was a full house! Great to see over 65 members back with us to enjoy lots of train fun. Special thanks to Ralph Spielman from New York who brought us delicious cookies from Massachusetts. They were gone in a flash.

Our membership is stronger than ever. We had three new members join at the meeting and as I write this, I'm delighted to say I've just welcomed a new member from St. John's, NL, the furthest point on the continent from our meeting hall! We are now truly a Coast-to-Coast Club, and have surpassed 200 members! Thanks to those of you who have brought the new members on board.

Please welcome:

Thomas Ronayne - St. John's, NL

Doug Witzel - Surrey, BC

Grant McRadu - Garibaldi Highlands, BC

Cosimo Petruzzelli - Burnaby, BC

Mark Horne delivered our new Vancouver, Victoria and Eastern Railway reefer from Atlas O. It's a beauty and you should have yours now. Thanks to all who supported this project.

Vancouver Train Expo is confirmed for Nov 4-5, and CTTA is confirmed as a feature exhibitor. Our recent showing at the Sea-to-Sky Train Show at the Railway Museum of BC was very successful. Thanks to the new crew members - Don, Bruce, Chuck, Ed, Keith - who came out to run trains. It's great to be getting out to Train Shows again! Hope to see as many of you as we can at the April meet on the 30th.

Cheers, Kyle

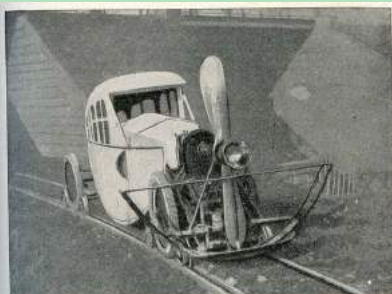
2022-23 CANADIAN CLUB MEETS

meetings at Charles Rummel Community Centre, Burnaby
doors open at 11am UPCOMING DATES:

SUNDAY APRIL 30 2023

SUNDAY MAY 28

SUNDAY JUNE 25



Auf Schienen laufender, durch eine Fußspindel getriebener Wagen



March Door Prize Winners



No wind, snow or sleet deterred us from our appointed meeting.



A number of interesting trains were seeking buyers, from General sets to a 746 NSW short stripe northern.





Left: Jim, Gord and Charles celebrate 'tweed day' at the March meeting;

Near left: Charles shows off a charming german train boxtop artwork that Martin found and gave him;

Right and Below: Gordon Hall displays his custom painting skills with PGE passenger cars and, for Jim, a PGE crane tender (what many of us need).



CTTA members David Cook and Robin Dodson show the colours in Ontario at the Kitchener Train Show



New Standard Gauge acquisition for the club layout-introduced to the membership, and featured on Kyle's layout. Its going to look great on the club layout!



EVENTS:

Sun May 7, 12 noon, Nanaimo

COOTTS MEET

INFO: jdcookaq@outlook.com sgtsudds@gmail.com

Sun Sept 24, Sidney BC

VICTORIA MODEL TRAIN SHOW

INFO: stay tuned

EDITOR'S CORNER (CHARLES REIF):

QUESTION: DO YOU HAVE A FAVOURITE
KITBASH OR INTERVENTION TO SHARE?

EMAIL: CREIF@SHAW.CA

LET US SEE YOUR LAYOUT'S PROGRESS:
SEND PHOTOS AND DESCRIPTIONS

IN MEMORIAM — JORGE BERISTAIN



IT IS WITH REGRET THAT WE ANNOUNCE THE DEATH OF MEMBER JORGE BERISTAIN.

JORGE WAS A MODEL BUILDER EXTRAORDINAIRE. OUR CLUB WAS VERY FORTUNATE TO EXPERIENCE HIS SHOW & TELL'S OF HIS LATEST RAILWAY BUILDING PROJECTS, AND FOR SOME MEMBERS TO BE ABLE TO COMMISSION STATION BUILDINGS.

THERE WILL BE A FEATURE ON JORGE AND HIS MARVELOUS MODELS IN A FUTURE EDITION OF THE CANADIAN FLYER.

OUR CONDOLENCES TO MAUREEN AND FAMILY.



a British
Columbia Railway
in 1912?

← ← ← ←
who has
any information
about this
mystery line?
where did it go?
what happened
to it. This was
before the PGE
existed.



Don McKay

March 23 at 8:58 AM · 🌐

Thought the group would like this
Stopped by the 374 Pavillion yesterday and found it open and was reminded their Annual Pull
Out is May 21 Also they are always in need of Volunteers





Many CTTA members helped organize, run and celebrate the second Sea To Sky Model Railway and Hobby Show on March 18 & 19 at the Railway Museum of BC in Squamish watched over by old 2860.



The CTTA Modular Layout was there in full force, thanks to old and new volunteers. Gordon Hall had his great interactive layout going too.



from Via Rail to Moskabel, with lots in between, and don't forget Thomas!

An unexpected prototype
 Louis Marx & Co. meets Canadian Pacific Railway
 by Charles Reif

In 1936 Louis Marx & Co. introduced a Canadian Pacific toy passenger train with 8 whl cars pulled by a semi-streamlined 2-4-2 loco, or with 4 whl cars pulled by an 0-4-0 loco, which came in electric or windup versions. A total of 8 different coaches were made, named for 8 Canadian cities.



The lithographed tin cars were decorated with gold 'canadian pacific' lettering in a gold-outlined black lozenge, pointed at each end.



Where did that design come from? I was only familiar with the maroon cars with just gold lettering (above). Then I went looking in that wonderful website 'Old Time Trains' (trainweb.org)



First up I found CP's first diesel locomotive, #7000. And it was built in 1936 too!

And finally, a coach with the same lozenge design. Made in 1937 — for CP's high speed jubilee train?



How long did CP use this design? Not on any of its postwar coaches. Maybe it was used only for a couple of years, which would be fitting, as Marx stopped making its CP coaches in 1937. The toy loco meant to represent the 4-4-4 Jubilee locomotive, however, went on to pull many different freight sets in the USA as well as Canada, and was only 'retired' in 1952.

MADISON HARDWARE
 BARGAIN HUNTER SPECIALS

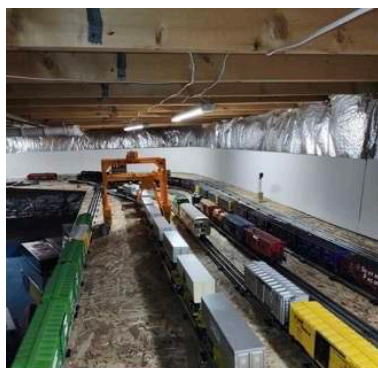
746 LTS REG 49.95 SPEC 32.95

2373 CP PAIR REG 49.95 SPEC 32.95

2331 VIRG REG 39.95 SPEC 26.50

MODEL RAILROADER DEC 1957

*they sure didn't wait long to discount the 746 and 2373, which only came out in 1957!



work on Brian Dziewinski's Dream Layout continues.
 [videos on CTTA facebook]

