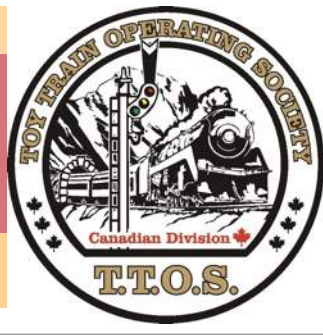


JANUARY 2012

VOL. 10, ISSUE 1

# canadian



# flyer

THE CANADIAN DIVISION OF TTOS

NEWSLETTER OF

## 2012-13 OFFICERS

president -- mark horne  
 604 560-4028 [mlhorne@shaw.ca](mailto:mlhorne@shaw.ca)  
vice president -- gary zabenskie  
 604 463-1006 [gzaben@telus.net](mailto:gzaben@telus.net)  
secretary -- charles reif  
 604 731-3674 [creif@shaw.ca](mailto:creif@shaw.ca)  
treasurer -- neil mackenzie  
 604 263-4429 [nsmac@telus.net](mailto:nsmac@telus.net)

### members at large:

james cook -- 604 948-1443  
[jhcook@telus.net](mailto:jhcook@telus.net)  
 john warlimont -- 604 864-2175  
[jewarl@yahoo.ca](mailto:jewarl@yahoo.ca)  
 tom modica -- 360 738-3842  
[ogfhr@gmail.com](mailto:ogfhr@gmail.com)  
 peter tolifield -- 604 793-4814  
[peterandmarilyn@telus.net](mailto:peterandmarilyn@telus.net)

### island member:

ken bowman -- 250 592-6194  
past president -- david cook  
 604 931-4056 [railroadnut@shaw.ca](mailto:railroadnut@shaw.ca)

## PRESIDENT'S REPORT

Happy New Train Year, gentlemen and ladies. I hope your train collection grew this holiday season.

This should be another exciting train year. Be sure to attend the January meeting; the Monroe Train Show the week following the meeting and, if you can, the World's Greatest Hobby Train Show in Portland at the end of February. Speaking of the Monroe Show, please see Neil at the meeting if you can assist setting up, operating or packing up the layout at Monroe.

To update you on the PGE tank car: although I was told it would be shipped in October, it was not, so now it looks like January shipping, which means February to you. I will keep you posted.

The executive will be meeting prior to the January meet and I should have several announcements regarding our next car -- a "BA Oil Tanker" and "????".

Notes from National state that "Randy is no longer employed by TTOS". More details at the meeting. See you in January.

MARK



## 2012-13 TTOS CANADIAN DIVISION MEETS

all meets at Charles Rummel Community Centre, 3630 Lozells Ave.  
 Burnaby B.C. [doors at 11am, meeting 12:30]

### UPCOMING MEET DATES:

JAN 29, 2012

FEB 26, 2012

MAR 25, 2012

APR 29, 2012

# CHRISTMAS DRAW

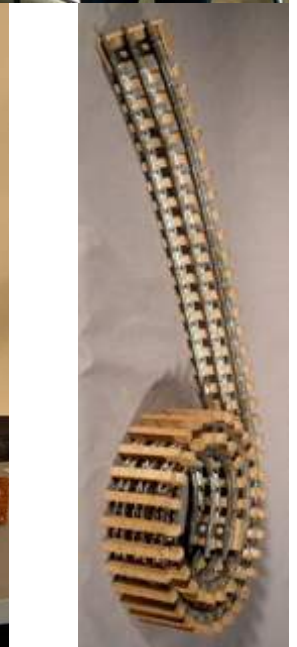


George Hammond and Martin Howbold have “powerful motives” to return.

Sid Ball can “derrick the halls”

Gordon Hall and Tom Modica had our number

Jorge Beristain and ally enjoy “pris du portez”?





What a fabulous day for a bus trip! All smiles! Best finds? Freddy found a new best friend! Take off!



*the TCA Toy Train Museum --- Strasburg, Pennsylvania [as seen by Gary & Katelon]*



# UPCOMING EVENTS

Jan 21, Portland, OR --- Spokane Portland & Seattle Railway Historical Society, Railroad Swap Meet [www.spshts.org](http://www.spshts.org)

Feb. 4&5, MONROE WA --- United Northwest R.R. club/ Snohomish County 4H Foundation. [www.unwclub.org](http://www.unwclub.org)

Feb.25-26, Portland, OR --- World's Greatest Hobby on Tour Train Show, Oregon Convention Center [info@wghshow.com](mailto:info@wghshow.com)

Mar. 4, Nanaimo --- Toy Train Meet See Advert ----->

FLASH!!! HOGE STREAMLINER AT NANAIMO MEET!!



bidding was furious, we hear, at the Dec. 4 COOTS meet, as Hoge #900 made its first appearance in recorded memory, at least at a TTOS event hereabouts. You just never know!



## NOTES FROM THE EDITOR

Thanks to Peter for the Meet and Bus Trip pix, Gary and Katelon for Toy Train Museum pix.

visit [ttoscanada.org](http://ttoscanada.org)

PRINTED IN CANADA BY: KQ PRINT AND DESIGN  
604 940-2020

## TOY TRAIN MEET

Nanaimo  
Sunday  
March 4,  
2012

12:30 pm -  
4:30 pm

Open to  
Collectors and  
Operators of  
Lionel, Flyer,  
Ives,  
Marx, K-Line,  
Hornby, MTH,  
Williams, Weaver,  
Marklin, etc.



Oliver Woods Community Centre  
6000 Oliver Road  
Nanaimo, B.C. Admission \$5.00

Table Sales, Displays, Show and Tell, Door Prizes, Refreshments.  
Bring Trains to Sell!!



Create your own!  
**CLUB WEAR**  
Sew on Patches  
Price includes all taxes. **\$8.50**

Apply to your favorite jacket, vest or shirt.

Available at the meetings - see Dave Scott  
Nurdy Graphics, 604-530-6612 Phone/Fax, e-mail: [Nurdy@telus.net](mailto:Nurdy@telus.net)

## reif railroad

**We're Never Late Because  
We Have No Timetable!**

rent this space (please)!

## EASTSIDE TRAINS, INC.

Lionel Factory Authorized Sales & Service  
All Popular Makes & Gauges  
Buy, Sell - New or Used

217 Central Way  
Kirkland, WA 98033  
(425) 828-4098

Fax (425) 803-0456  
Toll Free (877) 857-7246  
[www.eastsidetrains.com](http://www.eastsidetrains.com)

## ELECTRIC TRAINS

**TRAIN STATION WATCHES**

*(from a text forwarded by Mike Venables, thanks Mike)*

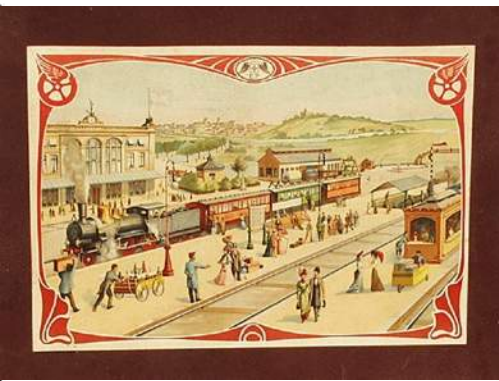
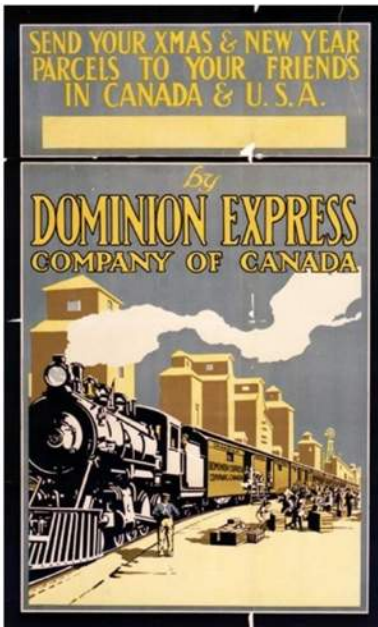
*Where would you go to buy a watch in 1880? For about 500 towns across the northern United States, if you wanted one cheaper and a bit better than most store watches, you went to the train station.*

*Why, you might ask, were the best watches found at the train station? The railway companies weren't selling them; the telegraph operator was.*

*A fellow named Richard set this all going. He was a telegrapher himself, in a place called North Redwood, Minnesota. One day an impressive shipment of watches came in from Chicago. The intended recipient didn't want them. The sender didn't want them back. So Richard undertook to sell them. He sent a wire to every agent in the system asking them if they wanted a good cheap watch. He sold the entire case in a couple of days, at a handsome profit.*

*So he ordered more watches, and got the station agents to set up displays in the stations. Soon travellers were buying watches at the stations. And pretty soon people came down to the stations just to buy a watch.*

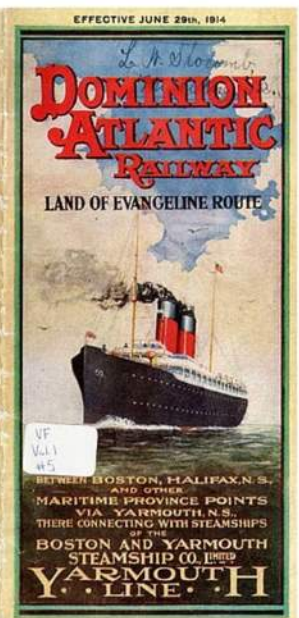
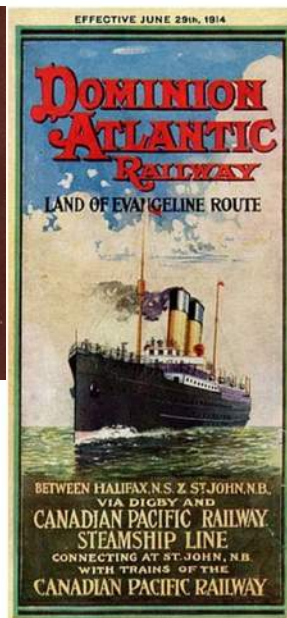
*Richard became so busy he had to hire a watch maker to help out. His name was Alvah. Eventually they moved their business to Chicago, and its still there. Their names? Richard Sears and Alvah Roebuck!*



DOMINION EXPRESS COURTESY CPR

DOMINION ATLANTIC COURTESY NOVA SCOTIA ARCHIVES

OLD GERMAN TOY TRAIN BOXTOP BY INTERNET



A LITTLE BACKDROP PAINTING WORKSHOP

BY CHARLES REIF (WITH/FOR DAVID R-T)



1. distant hills marked out in light green, on wall above unpainted plaster landscaping.



2. foreground hills laid over in medium green, with dry-brushed "treetops" along top edge.



3. modeled trees cast shadows too visible on flat green painted hillside, required modifications.



4. dry-brushed zig-zag "trees" painted in darker green give depth to nearer hill, hide shadows. distant hills toned a bluish-green for greater distance.



5. plaster landscape given "earth brown" paint. trees, ground covers and shrubs in background by owner.



6. finished scenic effect. backdrop painting is sketchy enough to give sense of distance, not dominance.