



# Canadian Flyer

Volume 20, Issue 6

June 2022

## Operating and collecting toy trains

### CTTA 2021-2022

[canadiantoytrains.org](http://canadiantoytrains.org)

#### OFFICERS:

President — Kyle Miller  
604 941-3372

[kylemiller@telus.net](mailto:kylemiller@telus.net)

Vice Pres -- Gary Zabenskie  
604 463-1006

[gzaben@telus.net](mailto:gzaben@telus.net)

Secretary -- Charles Reif  
604 731-3674

[creif@shaw.ca](mailto:creif@shaw.ca)

Treasurer — James Barrett  
604 939-8035

[barrettjd007@gmail.com](mailto:barrettjd007@gmail.com)

#### DIRECTORS AT LARGE:

James Cook -- 778 554-1110

[jdcokaq@outlook.com](mailto:jdcokaq@outlook.com)

John Warlimont -- 604 864-2175

[jewarl@yahoo.ca](mailto:jewarl@yahoo.ca)

Tom Modica -- 360 738-3842

[ogfhr@gmail.com](mailto:ogfhr@gmail.com)

Peter Tofield -- 604 793-4814

[tofieldpeter@gmail.com](mailto:tofieldpeter@gmail.com)

Gord Barrett — 604 988-4263

[gordon.barrett55@gmail.com](mailto:gordon.barrett55@gmail.com)

Howie Williams — 604 856-7124

[howielw@shaw.ca](mailto:howielw@shaw.ca)

#### Island Member:

Ken Bowman -- 250 592-6194

[k.bowman@shaw.ca](mailto:k.bowman@shaw.ca)

#### Ontario Member:

Robin Dodson -- 250 713-8970

[robindodson43@yahoo.com](mailto:robindodson43@yahoo.com)

#### PAST PRESIDENT:

Mark Horne - 604 560-4028

[mlhorne@shaw.ca](mailto:mlhorne@shaw.ca)

#### WEBSITE & MEMBERSHIP

[kylemiller@telus.net](mailto:kylemiller@telus.net)

### PRESIDENT'S REPORT #9

A lively gathering of over 60 members, and our first of two consecutive Summer BBQ lunches made for a great May meet. Thanks Grillmasters Gary Z, Terry Berg and Condiment Coordinator Dave Emmington for serving up a fine lunch.

We have lots to celebrate this month!

#### **Mark Horne has delivered two fabulous new Club Cars within a week.**

The new O scale Canadian Northern Gondola and British Columbia Railway Airslide Hopper are beautiful additions to your collection and you should have yours now.

**I want to send a special thanks to Gary and Katelon Zabenskie**, who attended their last meet in Vancouver for at least a little while. With Katelon's retirement, they are off to Lethbridge, AB to start a new life closer to Family. A new house with more space means a new layout is imminent. Gary has served as our VP for 11 years, and Katelon served previously with our Food Services committee. You will both be missed!

**Mark Horne and I were privileged to be invited to celebrate a special 'Depart with Dignity' ceremony for treasurer James (Jim) Barrett in May.** Jim has served with the Canadian Army for almost 39 years. Jim looks just as sharp in a tie as he does in fatigues! Jim assures us he hopes to stay retired for at least a few days. On behalf of the CTTA members and veterans everywhere, THANK YOU, and Patricia, for your Service to Canada.

**Best wishes to Shayne Lovelace**, who's setting out for the beautiful shores of Croatia on the Adriatic Sea for the next chapter of his life. That will make him the first European CTTA Member and I'll be eagerly awaiting news of O gauge trains in the area.

**Join me for an online ZOOM Meeting on June 12 at noon PT.** It's been a long time since we connected the entire North American Membership. The invite has been sent.

*continued on page 3...*

### 2021-22 CANADIAN CLUB MEETS

meetings at Charles Rummel Community Centre, Burnaby B.C.  
doors open at 11am      UPCOMING DATES:

SUN JUNE 26

SUNDAY SEPT 25 (AGM)





Gary and Katelon say goodbye on a winning note!

Bound for Lethbridge where they will take up the burden of retirement.

CTTA exec and members thank them for all they have done for the club over the years.

Gary has agreed to stay on the Exec, and as VP until the Sept. AGM



Martin and Graham also won door prizes at the CTТА May Meeting



Train folk and train tables — can we deal?



where is that deal?



Lionel MPC and Lionel Postwar abounding

and something different



'BBQ-meisters' at work with appreciative audience

and Ed delivers on the soft drinks

...continued from page 1

**It's finally time to break out the modular layout !** After an almost 3 year pandemic induced hibernation, the CTTA will be returning to Rainbow Creek Station at the Burnaby Central Railway for 3 weekends in a row of public display and operating fun. This is a great opportunity for members to bring trains to run and have lots of fun all over the Railway park.

We'll be there July 9-10, 16-17 and 23-24, and we need NEW members to step up and join the operating crew! We set up on Friday the 8th, and pack out Monday the 25th. With retirements and Crew Members moving on, we need new blood to help us continue having an operating layout. Help us out!



See you at the June meeting.

Kyle

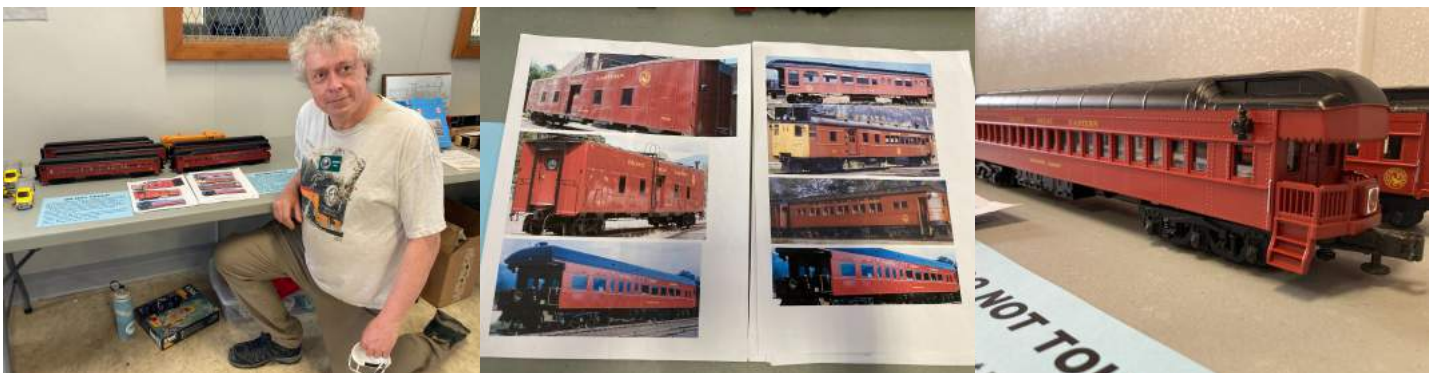
Look what's up for bid, gentlemen! B.C. Electric! and Lionel electrics.



Vies Szalanksi almost does a 'show and tell' with Marx Disney and AF Empire Express



an inspection car, and an inspection of 2 Marx boxed sets.



**Gordon Hall** brought for show his custom-painted PGE passenger cars, with pix of the prototypes. He's waiting for that PGE 2-8-0 that Lionel is making on custom order.

## EVENTS:

Fri June 17, Burnaby BC

**BCSME SWAP MEET** (see Meet Notice below)

July 9-10, 16-17, 23-24, Burnaby BC

**CTTA MODULAR LAYOUT AT BCSME (BURNABY CENTRAL)**

(see President's report pg. 3)

Sun Sept 25, Victoria BC

**VICTORIA MODEL RAILWAY SHOW** (see Notice)

## EDITOR'S CORNER (CHARLES REIF):

A SHOUT-OUT TO OUR GREAT CLUB CAR  
CREATIVE 'TEAM' FOR A DAZZLING SEQUENCE  
OF CARS!!

WE INVITE ALL MEMBERS TO SEND US PHOTOS\*  
OR ARTICLES FOR THE NEWSLETTER, AT  
[creif@shaw.ca](mailto:creif@shaw.ca)

\*AND EXPLANATORY NOTES PLEASE.

## British Columbia Society of Model Engineers



is pleased to Host an Open-Air Swap Meet

Friday June 17, 2022

12:00PM Noon to Dusk

At the Burnaby Central Railway  
120 North Willingdon Avenue, Burnaby, BC

This Swap Meet is for all Model Railway gauges.

**Vendor tables will be \$10.00**

Parking is on the Streets or in one of the 2 Public Parking Lots adjacent the Station. Onsite loading/unloading is permitted, but space is limited.

While the Concession Stand will not be open on this day the barbecue will be available as this event is being held in conjunction with a scheduled Play Day at the park.

Vendors will also be Responsible for removal from the Site of all their own boxes, packaging, food stuffs and any unsold items at the end of the day.

To Book a table for this event please contact:

[gardenrailway@bcsme.org](mailto:gardenrailway@bcsme.org)

or

[pjberry@shaw.ca](mailto:pjberry@shaw.ca)

30<sup>TH</sup> ANNIVERSARY - VICTORIA'S ANNUAL

# Model Railway Show

## 2022

**Sunday,  
September 25<sup>th</sup>\***  
**10 am - 4 pm**

**Mary Winspear Centre**

2243 Beacon Avenue, Sidney

Free Parking

Operating Model Railroads & Displays  
Commercial & Individual Sales

For More Information:

Ted Alexis ph: (250) 595-4070

## Admissions

Adults ..... \$8

Family ..... \$16

NMRA/PNR Members ..... \$7

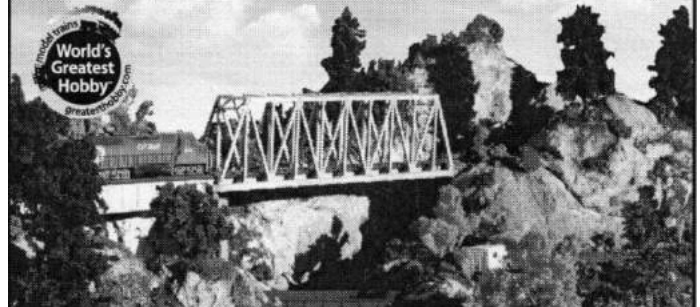
Youth ..... \$7

Children (8 and under) **FREE**

when accompanied by an adult

Supporters of C-Fax Santa's  
Anonymous, the Times Colonist  
Christmas Fund.

Supported by B.C. Hobbies



Maynard Atkinson

May 16 at 11:05 AM · 📷

The photo dated 1905 shows Western Fuel #11 at Fiddicks Junction of the Esquimalt & Nanaimo Railway.

Dylan Bohaychuk flags a link to the Edmonton  
Train Collectors Association website



[EDMONTONTRAINCOLLECTORS.CA](http://EDMONTONTRAINCOLLECTORS.CA)



Dan Gory's green PGE RS-3 is finished, and looking fine!

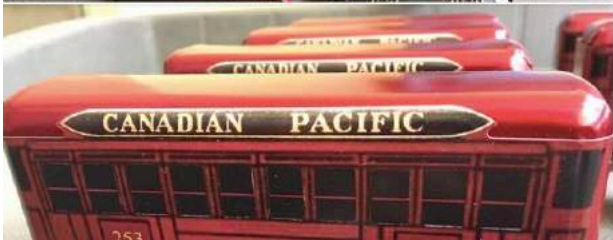


Arthur Sheridan sent us this post by Dan Conlin of the Dominion Atlantic Railway group, [DARDPI.ca](http://DARDPI.ca), and suggested that this Imperial Premier tank car would make a good club car.

Well in 2014 CTTA did its cousin the Imperial Marvelube tank car, and it was a great success.



David Cook sent along these pictures of his recently acquired Marx CP replicas, made for him by Zolton of Burlington ONT. from some old Marx tenders.



The original Marx CP coaches were only made in 1936 and 1937 — hard to come by and not cheap. So here is a novel option.

Another almost 'show and tell' by Gerry Shaw, who years ago built this scale model Port Moody station from the plans he got from the CPR.



Beautiful, Gerry, and I hope you can arrange to bring it back and get it on display.



people have retired, and some moved away!

CTTA is looking for new volunteers for:

Food Service Team —

thanks to retiring **Peter Tofield** for managing,  
and to **Katelon** for assisting.

Peter has passed on details for the next heroes.

Grill Masters —

**Gary Zabenskie** is off to Lethbridge and assistant  
**Terry Berg** will soon be off to Kelowna.

Who will step forward 2-3 meets per year?

Modular Layout Gurus —

**Gary Z, Neil Wilson** and **Neil Whitehead** have the  
wisdom and need to pass it on.  
Needed are a couple of electrical whiz's and eager  
new setup-and-run recruits, starting July 8 at the  
Burnaby Central Railway site (see President's report).

Contact **Kyle** or **any Exec. Member** if you  
are ready to help.



**Brian Dziewinski** presses forward with  
the Union Station arm of his huge  
dream layout. And more to come.

That's a beautiful rack of lift bridges -  
love the red huts!



**Kyle Miller** says: "A perfect Spring day for hanging out at the Yaletown Roundhouse today for the annual 'Steam up' for CPR engine 374, the engine that pulled the 1st scheduled passenger train across Canada.  
Happy 135th Anniversary!"

