



Canadian Flyer

Volume 18, Issue 6

June 2020

Operating and collecting toy trains

CTTA 2019-2020
canadiantoytrains.org

OFFICERS:

President -- Mark Horne
604 560-4028

mlhorne@shaw.ca

Vice Pres -- Gary Zabenskie
604 463-1006

gzaben@telus.net

Secretary -- Charles Reif
604 731-3674

creif@shaw.ca

Treasurer -- James Barrett
604 939-8035

barrettjd007@gmail.com

MEMBERS AT LARGE:

James Cook -- 250 337-8255
jhcook@telus.net

John Warliment -- 604 864-2175
jewarl@yahoo.ca

Tom Modica -- 360 738-3842
ogfhr@gmail.com

Peter Tofield -- 604 793-4814
tofieldpeter@gmail.com

Island Member:

Ken Bowman -- 250 592-6194
k.bowman@shaw.ca

Ontario Member:

Robin Dodson -- 250 713-8970
robindodson43@yahoo.com

PAST PRESIDENT:

David Cook -- 604 970-5598
thetinman76@gmail.com

WEBSITE & MEMBERSHIP

Kyle Miller - 604 941-3372
kylemiller@telus.net

PRESIDENT'S REPORT

Gentlemen,

These very unusual times seem to never end but plans are underway so we can hopefully have a September meeting at our normal Burnaby hall.

In the meantime the club is planning on having a non-meeting / friendship circle train meeting in June at Earl's farm in Langley at **22901 - 0 Avenue**. He came forward and offered his place as a meeting location for a June get together. This is planned for **Saturday June 27th at 12:00 noon**, and each member attending must bring their own chair and sunscreen. **The club will be providing drinks, sandwiches and a cookie**. We will be spread out – social distancing and talking trains. Although there will not be an auction, if you bring a folding table there will be **table sales**. This is a great chance to reconnect and have a fun day. There will be lots of door prizes (although no door) and no meeting dues. A washroom will be available to members. Watch for an email from Kyle to confirm everything. [Due to max. 50 requirement, **NO GUESTS PLEASE**]

I am delivering the BC Market reefers now and also taking orders for our BC Electric depressed center flat car with transformer. I have sold enough cars that the project is a go but if you wish one and have not told me, I need order numbers not payment.

Our MTH BC Hydro diesels should be in Bellingham by the end of July or early August.

Be sure to visit our CTTA Facebook page as many members are posting great train layout pictures.

Be safe and stay home and play with your trains.

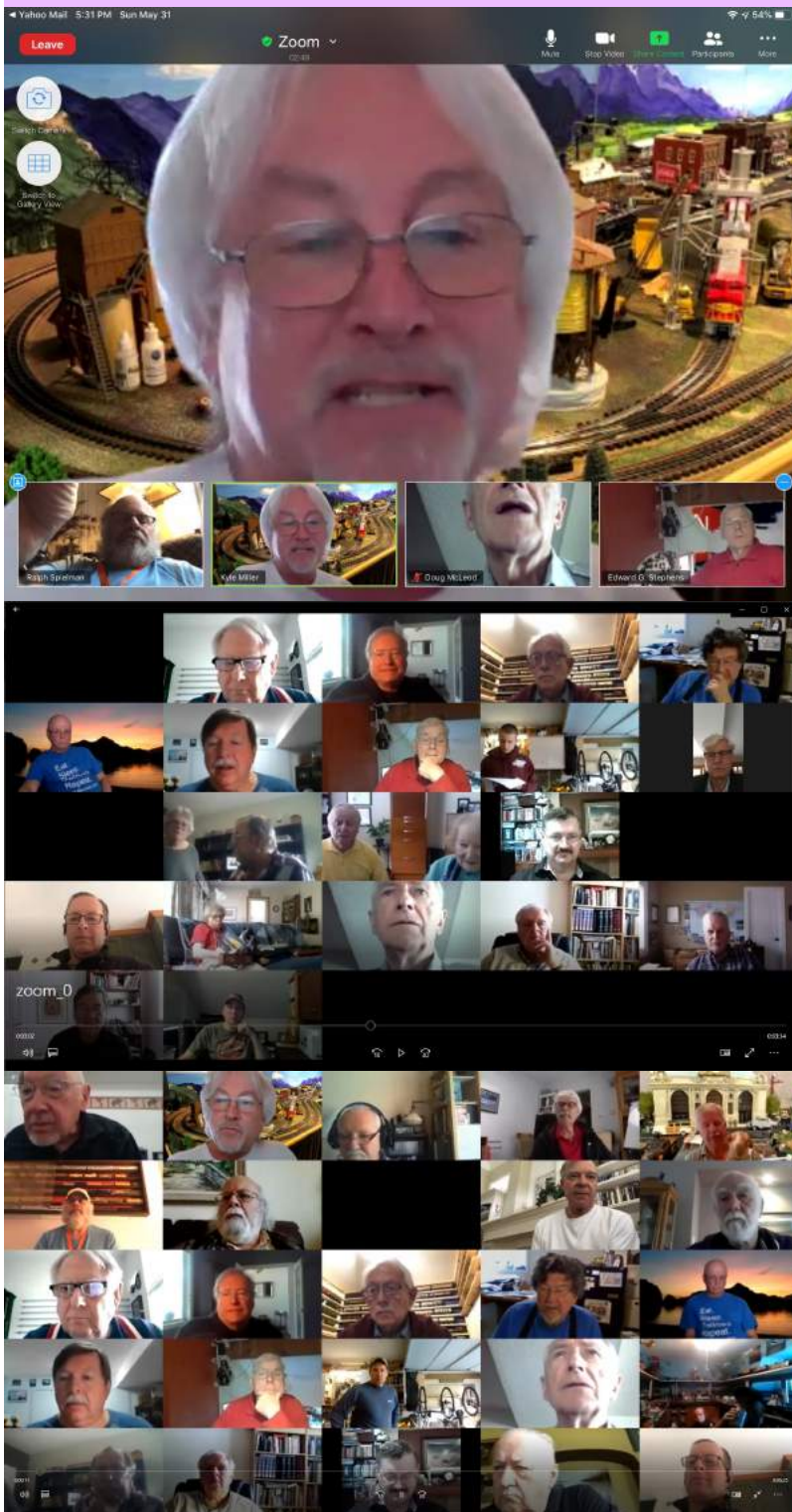
Mark

2019-20 CANADIAN CLUB MEETS

UPCOMING DATES: **JUNE BURNABY MEETING CANCELLED**

SAT JUNE 27 OUTDOOR MEETING — SEE ABOVE
SUN JUNE 28 ZOOM MEETING — SEE PAGE 3





CTTA 2nd Monthly Zoom meeting May 31, 2020

Kyle Miller presides over a wide-ranging meeting.

Thanks to all the members who were able to join us for our second online meeting! Our May Club event was another lively affair with lots of participation from the members in Eastern time zones. On behalf of the Club, I'd like to extend my appreciation to everyone who has taken the time and put in the effort to connect with your fellow member train enthusiasts across all North America. I think these online meets have proven to be so much fun, we'll have another one in June! If you're ready to join for us for the first time, we look forward to seeing you. Really!

A warm shout out and thank you to Ray & Doreen Palm, who recently retired away to Vancouver Island. They used to live quite close to me in Coquitlam. Ray & Doreen received their copy of the monthly Canadian Flyer by MAIL and saw that the club was planning the online meeting. Doreen called me by phone and said they wanted to attend. Their son contacted me and arranged for the Palms to visit for lunch on the day of our train meet and join from his computer. It was great to see you Doreen and Ray! Which proves that all forms of media are important when it comes to enjoying your trains and having fun with your toy train friends.

This time around, we also looked at the Members Buy & Sell page of our Web site. Since we can't have a live auction, we can still buy and sell trains. If you have something that another might enjoy, you're welcome to let us know.

Please send me any FEEDBACK you have regarding what worked, what didn't, what you'd like to see, and if you have something you'd like to share at a future meeting

Please reach out to me personally if you need help or guidance with getting set up with ZOOM so you can participate. Don't wait until the last minute!

Join us again for our THIRD ZOOM online meeting!

CTTA June Members Meet

Time: Jun 28, 2020 01:00 PM Pacific Time (US and Canada)

Join Zoom Meeting using this link

[https://us04web.zoom.us/j/74456616696?](https://us04web.zoom.us/j/74456616696?pwd=SncxdGxYWwNiRnAzVUk2Z3h5aE04QT09)
[pwd=SncxdGxYWwNiRnAzVUk2Z3h5aE04QT09](https://us04web.zoom.us/j/74456616696?pwd=SncxdGxYWwNiRnAzVUk2Z3h5aE04QT09)

If prompted, use

Meeting ID: 744 5661 6696

Password: 4STx8m

The Canadian Toy Train Association

is pleased to announce that MTH is manufacturing a British Columbia Electric depressed center flat car with transformer load in their Railking line.

This very limited production “O” gauge car comes in two road numbers in 3 rail.



Delivery is expected in late 2020 or early 2021.

The Canadian Toy Train Association member cost is \$ 85.00 CDN per car including shipping within the lower mainland and Vancouver Island.

With the drop in the Canadian dollar this is a real deal for our members.

NO payment required at this time but I do require order numbers

Mark

mlhorne@shaw.ca

UPCOMING EVENTS

Saturday June 27, 12 noon
22901 - 0 Avenue, Langley

EARL'S FARM
outdoor circle meeting

SEE PRESIDENT'S REPORT FOR DETAILS

don't forget to check the website for updates
canadiantoytrains.org

EDITOR'S CORNER: CHARLES REIF

THANKS TO EVERYONE WHO HAS SENT PICTURES OR ARTICLES. KEEP UP THE GOOD WORK.

SHOW US WHAT YOU'VE BEEN DOING.

PS DO YOU HAVE FIRST TRAIN OR FIRST LAYOUT PICTURES FOR AN ARCHIVES FEATURE? SEND TO EDITOR!

HOT OFF THE PRESS!

Get the perfect work caboose for your PGE crane.

As Mike Wolf has announced his retirement, and MTH is closing with this last catalog, the **Canadian Toy Train Association** is doing a special custom run to provide a Pacific Great Eastern crane tender to go along with our previously produced PGE crane. It is now or never!

This very limited production "O" gauge car comes in two road numbers in 3 rail. Artwork to follow. Delivery is expected in late 2020 or early 2021.

The Canadian Toy Train Association member cost is \$ 85.00 CDN per car including shipping within the lower mainland and Vancouver Island. With the drop in the Canadian dollar this is a real deal for our members.

Questions: email or telephone 604-560-4028

If you wish to order please email me right away as I need order numbers and mail your payment (payable to "Mark Horne") to:

Canadian Toy Train Association
c/o Mark Horne
16266 – 26th Avenue
Surrey, BC
Canada V3Z 6Z3



Tom Modica posts these lovely shots: red hot and cool blue.

Can you see the Santa Fe in American Flyer S gauge,? its a beaut!





Martin Howbold sends us a preview of the top portion of his 'Eisenbahn Bunker'.

Looks ready for a layout.

Martin writes:

'What would gladden the heart of JJ Hill more than the mighty R-2, well how about two R-2s to drag and push a 100 + car freight over Marias Pass. One has an enclosed cab and the other a California cab (perfect for Montana winters).'

magnificent beasts; and hard to believe that flimsy-looking truss bridge can hold them both. Wait till they're moving.



Phil Hastings models the Bates Motel (familiar to all Hitchcock fans from 'Psycho')
Would love to see it on a layout.... shudder.

Robin Dodson tracks down more USTTC coaches:

These are 3 of the 5 named for the Great Lakes. Where be Ontario and Michigan?



Mike Wolf Announces Retirement

Today in the weekly MTH Dealer Newsletter Mike Wolf announced his retirement plan and the end of MTH Electric Trains. Here is what he said:

Dear Loyal M.T.H. Customers,

June 8, 2020 - First, on behalf of M.T.H. Electric Trains, I want to thank you for the support and encouragement you have shown my company over our 40-year journey. From humble beginnings and a lot of hard work, we were able to build one of the world's largest model train manufacturers - one unquestionably buoyed by your unwavering support. In particular, I am proud that M.T.H. has released more models than any train manufacturer in the history of our hobby. The variety, quality, and infusion of technology throughout our offerings allowed M.T.H. Electric Trains to help bring enjoyment to all who share our wonderful hobby.

It is, therefore, with mixed emotions that I tell you I have decided to retire in 2021 and close the business. The last two M.T.H. catalogs, our 2020 Volume 2 O Gauge catalog, and our 2020 HO catalog and all non-delivered items from our 2020 Volume 1 O Gauge catalog, 2020 Ready-to-Run Train Set catalog, 2019-2020 S Gauge catalog, and 2019-2020 G Gauge catalog will feature the last products produced by M.T.H. Electric Trains.

The new items featured in all these catalogs will be available beginning Summer 2020 through April 2021 and will carry our limited one-year warranty supported by our Authorized Service Center network and the M.T.H. Service Department. Upon our closing in May 2021, our ASC network will provide warranty coverage through April 2022. A [list](#) of M.T.H. Authorized Service Centers is available on the M.T.H. website and will be updated as M.T.H. Authorized Retailers join the program over the coming months.

M.T.H. Electric Trains would not have enjoyed success without the support of the M.T.H. Authorized Retailer network. While traditional retail has changed significantly over the past decade, the independent hobby shop has been and continues to be the most important cog in our distribution chain. I truly appreciate the support and friendship these shops have shown M.T.H. I wish all of them good luck and prosperity in the years to come.

Finally, I want to thank all of my employees for their hard work over the years. Most of them have been with me for decades and their loyalty and talents were paramount to our success.

With thousands of tools and molds and a wealth of intellectual property, a new model railroading company may arise from my former company as I entertain various options and buyers. One scenario is a new company organized and owned by members of my current staff. Their decades of experience, work ethic, and creative talent will ensure success regardless of who owns the assets while providing a welcome bridge between the past 40 years and the future.

The remainder of my time will be busy as we clear out inventory and other miscellaneous items accumulated over the past 40 years. As that process evolves, we'll be offering consumer and retailer purchase opportunities

Again, from the bottom of my heart, thank you for your loyal support for all these years

A handwritten signature in black ink, appearing to read 'Mike Wolf', written in a cursive style.

Mike Wolf, President
M.T.H. Electric Trains



Kyle Miller goes Maritime with a 'Bluenose' corner with lighthouse 'on the rocks' and those Sidney and Louisburg hoppers.

Kyle got the lighthouse from a craftswoman near Peggy's Cove N.S., but it lacked rocks (see above).

Enter Gail Schmidt (of the z gauge mountains) and Dave Togwell (see his harbour scene with lighthouse — — —>) meeting at Terry Berg's Tsawwassen Arby's sessions.

Kyle asked, and Gail made the rock for his lighthouse.



Not the only 'Bluenose' on the west coast....
 But your Editor's model lacks the glorious open ocean of Kyle's design, and is sadly harbour bound.
 <-----

